

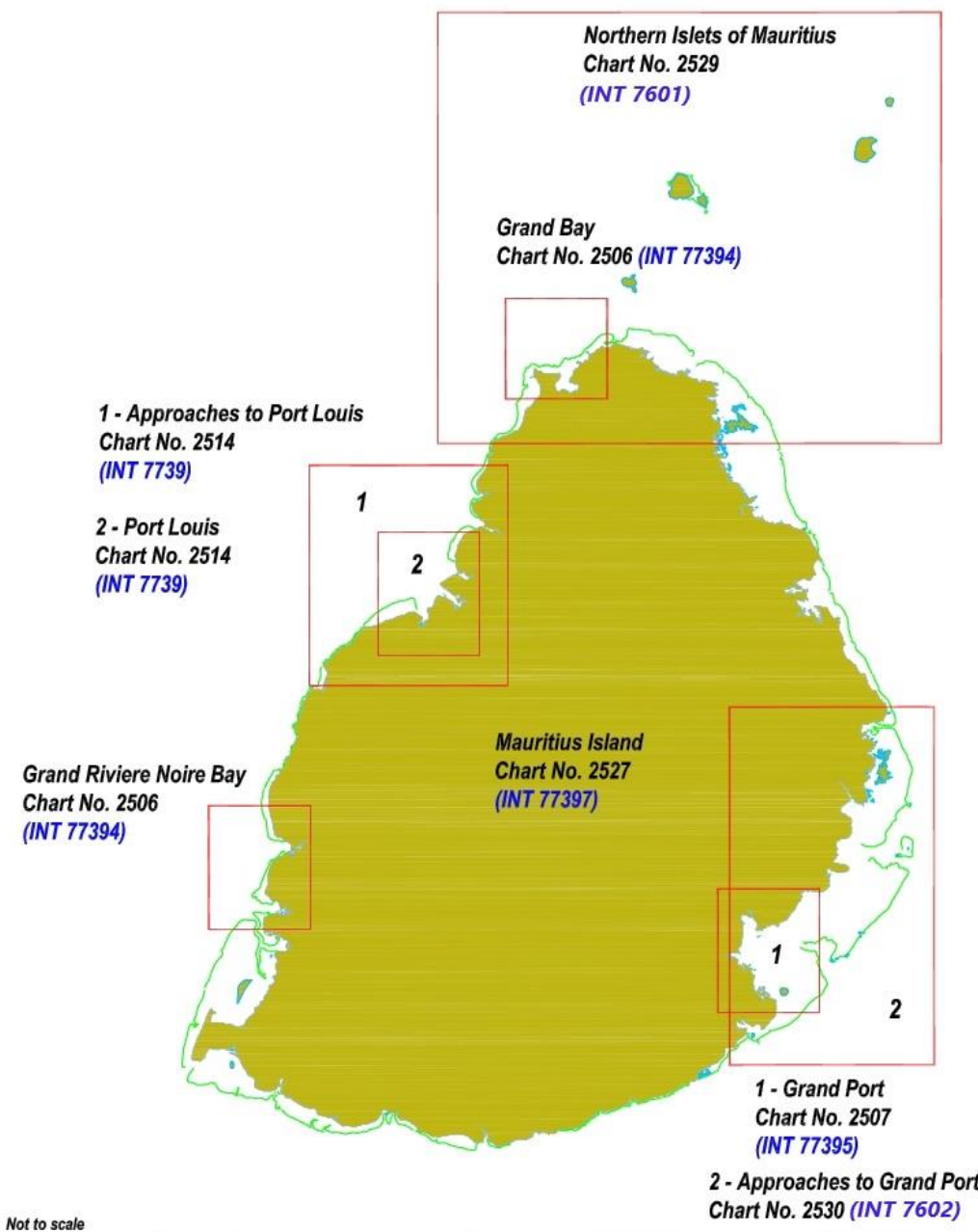
**CATALOGUE OF
PAPER CHARTS AND
ELECTRONIC NAVIGATIONAL CHARTS
REPUBLIC OF MAURITIUS**



Published by

**Mauritius Hydrographic Service
Ministry of Housing and Land Use Planning
Dec 2023**

MAURITIUS



CHARTS & ENCs

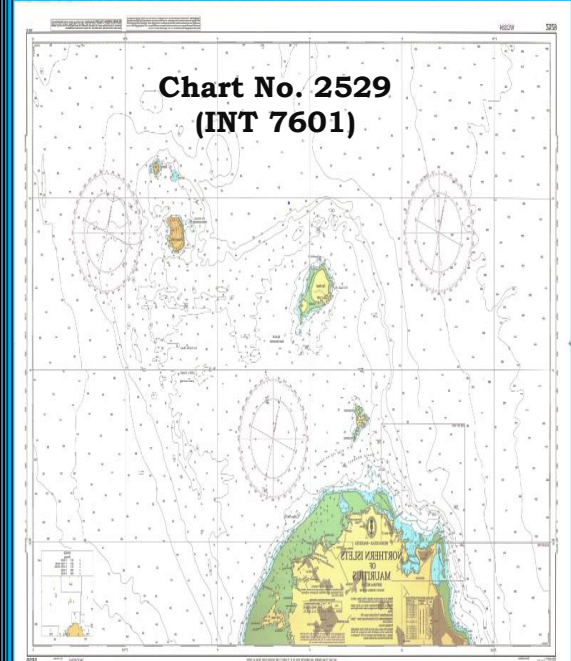
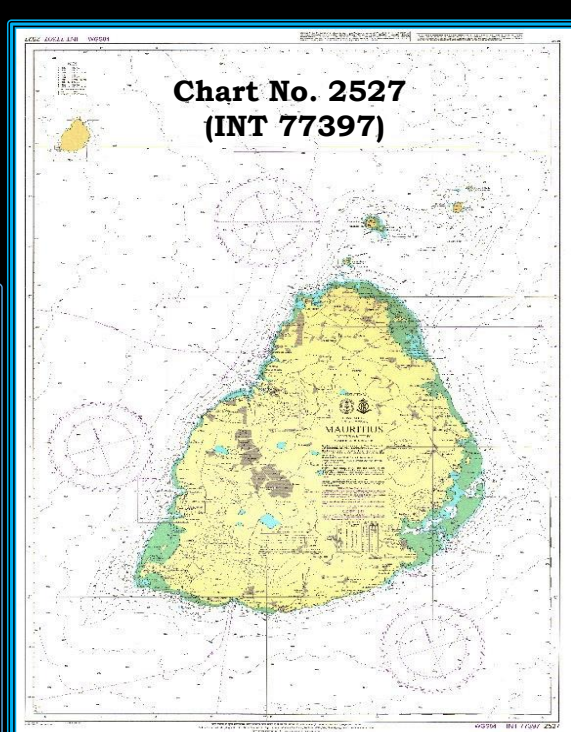
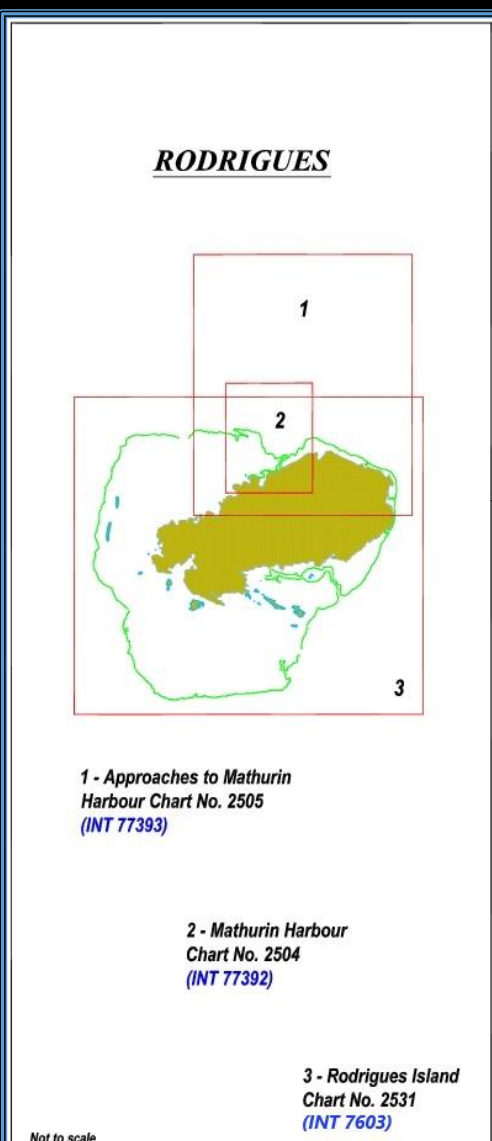


Chart No. 2527 (INT 77397)	Mauritius
Geographic Location	Mauritius Island
North Latitude	19° 35.40' S
South Latitude	20° 41.60' S
East Longitude	57° 55.60' E
West Longitude	57° 09.00' E
Scale	1 : 125 000
Projection	Mercator
Publication Date	15-Aug-23
ENC Number	IN32527M

Chart No. 2529 (INT 7601)	Northern Islets of Mauritius
Geographic Location	Mauritius Island
North Latitude	19° 45.50' S
South Latitude	20° 03.00' S
East Longitude	57° 55.00' E
West Longitude	57° 27.00' E
Scale	1 : 50 000
Projection	Mercator
Publication Date	15-Aug-23
ENC Number	IN42529N

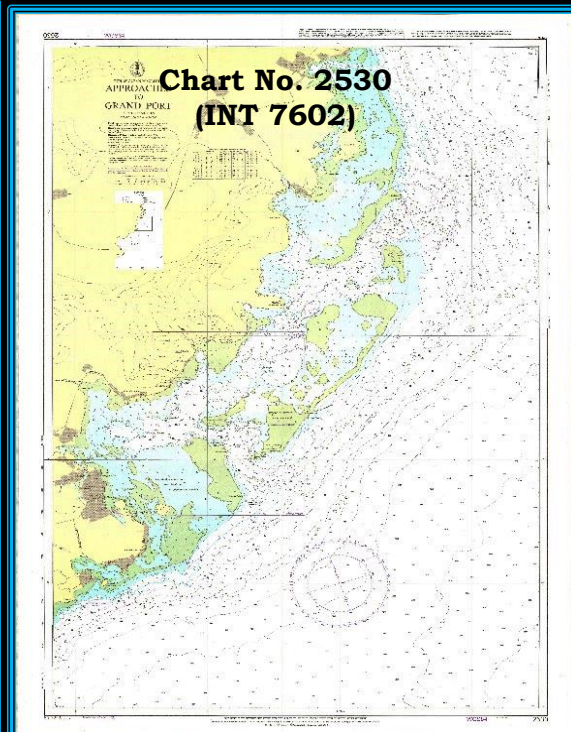
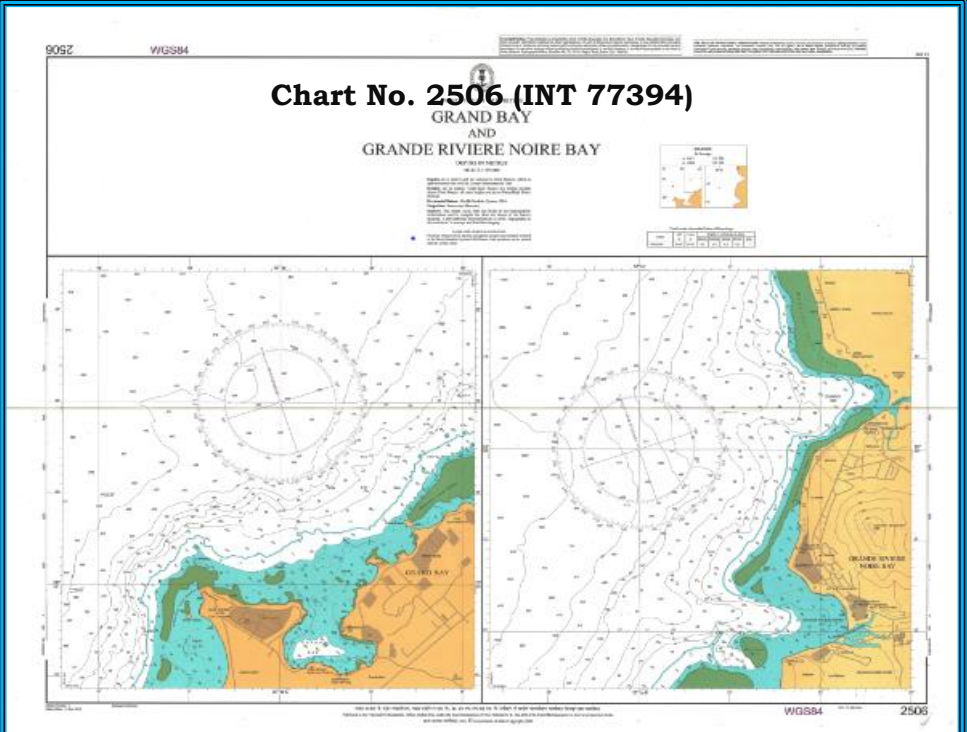
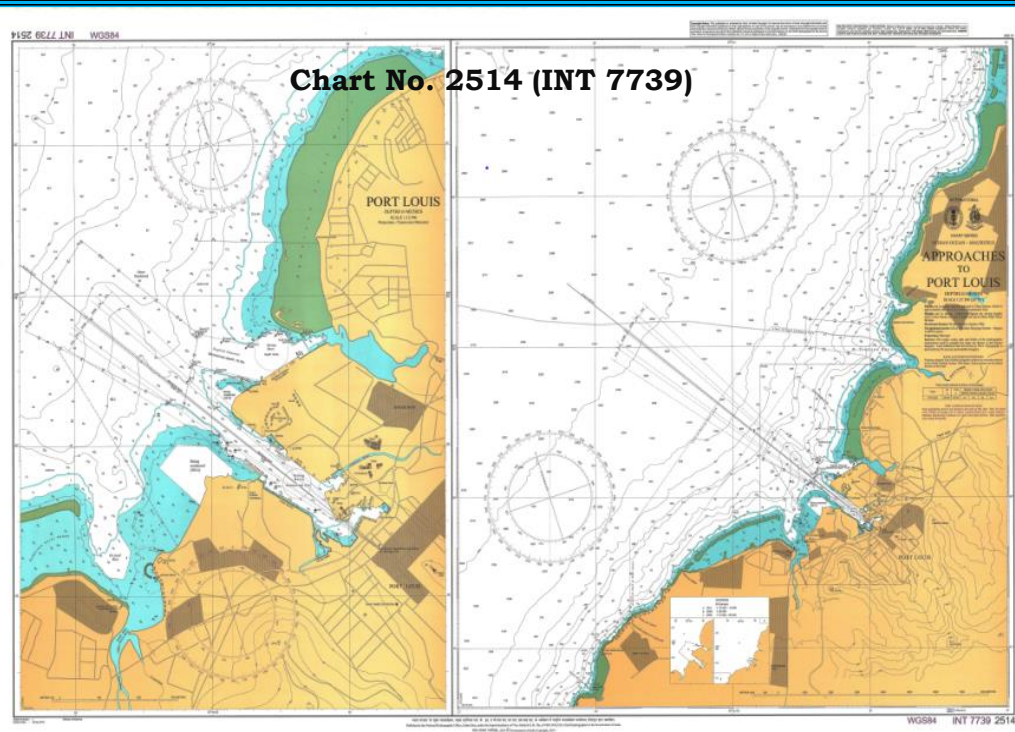


Chart No. 2530 (INT 7602)	Approaches to Grand Port
Geographic Location	Mauritius Island
North Latitude	20° 14.00' S
South Latitude	20° 30.00' S
East Longitude	57° 52.50' S
West Longitude	57° 41.50' S
Scale	1 : 30 000
Projection	Mercator
Publication Date	15-Aug-23
ENC Number	IN52530A

Chart No. 2514 (INT 7739)	Port Louis	Approaches to Port Louis	
Geographic Location	Mauritius Island	Geographic Location	Mauritius Island
North Latitude	20° 06.35' S	North Latitude	20° 00.04' S
South Latitude	20° 10.75' S	South Latitude	20° 13.16' S
East Longitude	57° 30.70' E	East Longitude	57° 33.00' E
West Longitude	57° 27.60' E	West Longitude	57° 21.00' E
Scale	1 : 12 500	Scale	1 : 37 500
Projection	Transverse Mercator	Projection	Mercator
Publication Date	15-Oct-18	Publication Date	15-Oct-18
ENC Number	IN62514P	ENC Number	IN52514A

Chart No. 2506 (INT 77394)	Grand Bay	Grand Riviere Noire Bay	
Geographic Location	Mauritius Island	Geographic Location	Mauritius Island
North Latitude	19° 56.56' S	North Latitude	20° 18.04' S
South Latitude	20° 01.13' S	South Latitude	20° 22.62' S
East Longitude	57° 36.14' E	East Longitude	57° 23.00' E
West Longitude	57° 31.60' E	West Longitude	57° 18.35' E
Scale	1 : 25 000	Scale	1 : 25 000
Projection	Mercator	Projection	Mercator
Publication Date	31-Jan-17	Publication Date	31-Jan-17
ENC Number	IN52506D	ENC Number	IN52506B

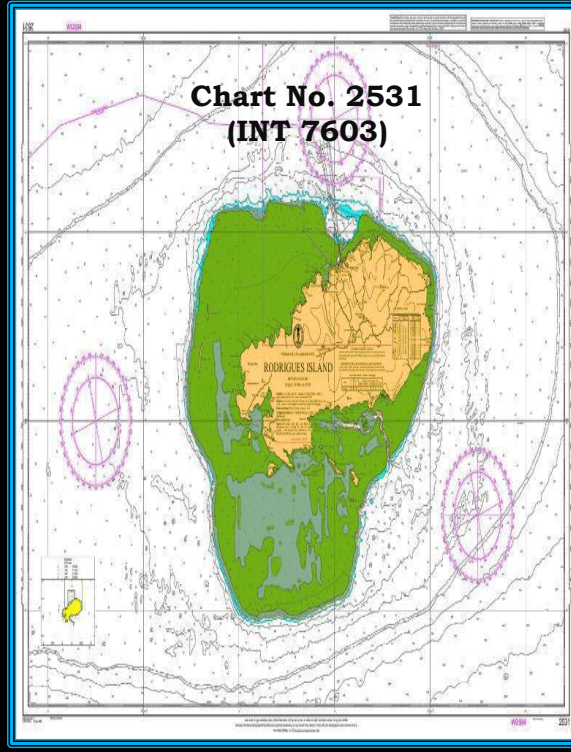


Chart No. 2531 (INT 7603)	Rodrigues Island
Geographic Location	Rodrigues Island
North Latitude	19° 52.50' S
South Latitude	19° 35.00' S
East Longitude	63° 09.00' E
West Longitude	63° 37.00' E
Scale	1 : 50 000
Projection	Mercator
Publication Date	15-Aug-23
ENC Number	IN42531R

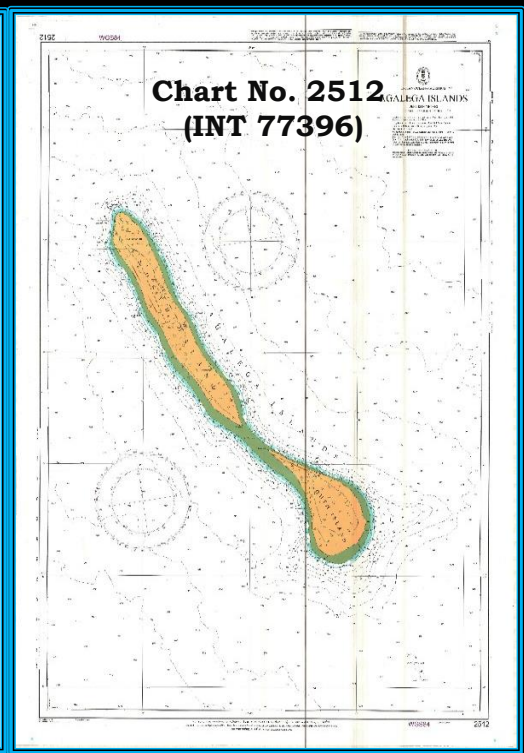
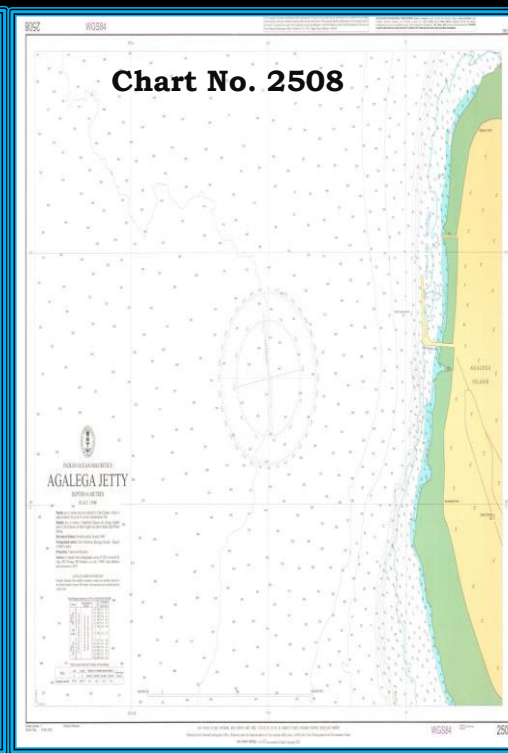
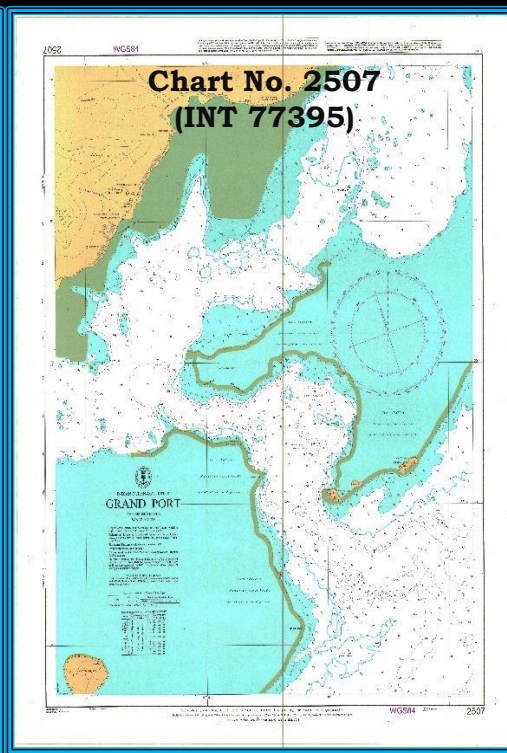
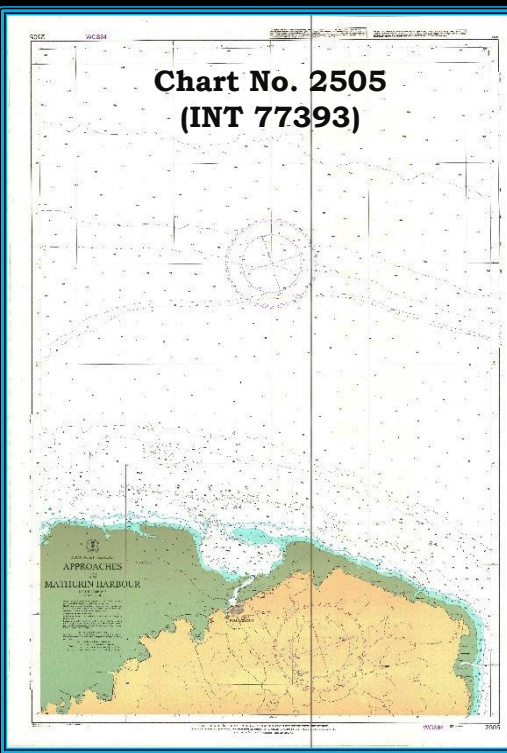
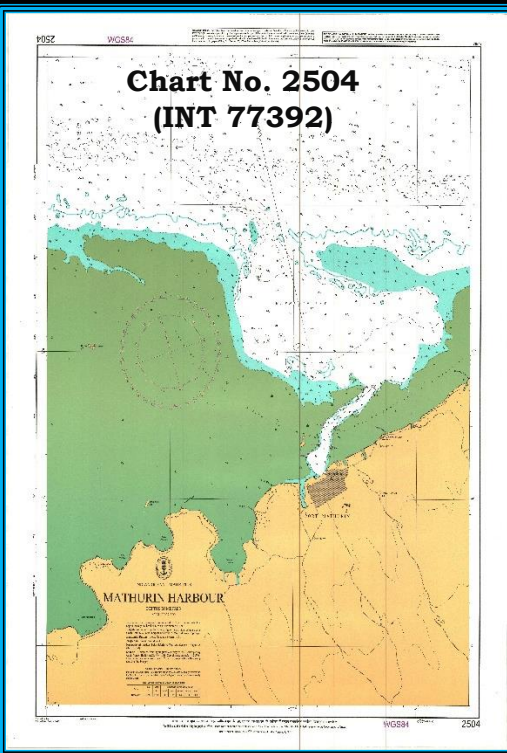
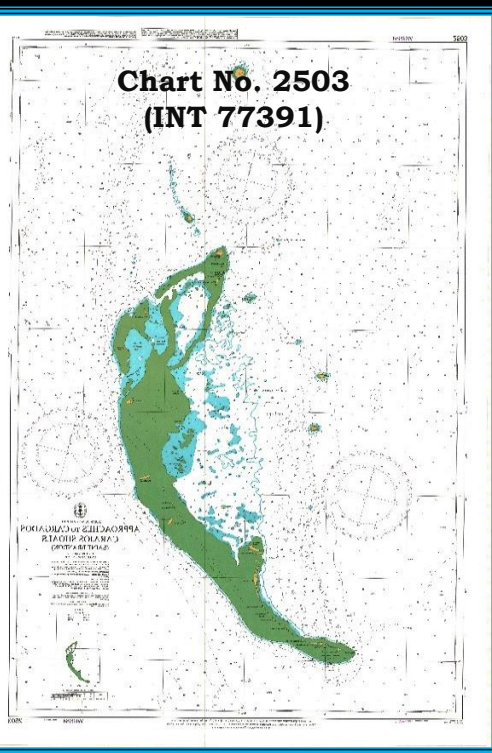


Chart No. 2503 (INT 77391)	Approaches to Cargados Carajos Shoals (Saint Brandon)
Geographic Location	Cargados Carajos Shoals
North Latitude	16° 13.00' S
South Latitude	16° 53.00' S
East Longitude	59° 49.00' E
West Longitude	59° 22.00' E
Scale	1 : 75 000
Projection	Mercator
Publication Date	15-Dec-16
ENC Number	IN42503S

Chart No. 2504 (INT 77392)	Mathurin Harbour
Geographic Location	Rodrigues Island
North Latitude	19° 38.00' S
South Latitude	19° 42.40' S
East Longitude	63° 26.43' E
West Longitude	63° 23.00' E
Scale	1 : 12 500
Projection	Transverse Mercator
Publication Date	15-Dec-20
ENC Number	IN62504H

Chart No. 2505 (INT 77393)	Approaches to Mathurin Harbour
Geographic Location	Rodrigues Island
North Latitude	19° 29.69' S
South Latitude	19° 43.00' S
East Longitude	63° 30.50' E
West Longitude	63° 21.25' E
Scale	1 : 25 000
Projection	Transverse Mercator
Publication Date	15-Dec-20
ENC Number	IN52505T

Chart No. 2507 (INT 77395)	Grand Port
Geographic Location	Mauritius Island
North Latitude	20° 20.90' S
South Latitude	20° 25.35' S
East Longitude	57° 47.20' E
West Longitude	57° 43.75' E
Scale	1 : 12 500
Projection	Transverse Mercator
Publication Date	29-Feb-20
ENC Number	IN62507P

Chart No. 2508	Agalega Jetty
Geographic Location	Agalega Islands
North Latitude	10° 20.10' S
South Latitude	10° 21.40' S
East Longitude	56° 35.35' E
West Longitude	56° 33.65' E
Scale	1 : 5000
Projection	Transverse Mercator
Publication Date	31-Mar-23
ENC Number	IN62508A

Chart No. 2512 (INT 77396)	Agalega Islands
Geographic Location	Agalega Islands
North Latitude	10° 15.90' S
South Latitude	10° 33.60' S
East Longitude	56° 45.45' E
West Longitude	56° 33.35' E
Scale	1 : 37 500
Projection	Mercator
Publication Date	15-Oct-23
ENC Number	IN52512I

**All listed Paper Charts & ENC's are published by
National Hydrographic Office, India**

Availability of Charts

Cartographic Section Ministry of Housing and Land Use Planning Level 3, Ebene Tower, Cybercity, Ebene, Mauritius Tel: +230 4681755 Fax: +230 4546608 Web: housing.govmu.org	M/s IIC Technologies Limited B-2-350/5/B-22, Road No. 3, Banjara Hills, Hyderabad – 500 034 Tel: +91 (0) 4039144444 Fax: +91 (0) 4039144455 Email: somnath.marthi@iictechnologies.com Web: www.iictechnologies.com
M/s C & C Marine Combine 25 Bank Street, 1 st Floor, Mumbai - 400 023 Tel: +91 (0) 2222660525/22661937/22672143 Fax: +91 (0) 2222670896 Email: ccmarine@vsnl.com , sales@ccmarine.in	Lift o Marine Paper / Digital Charts Allen's Mansion, Flat C6 Nungi Station Road, Kolkata – 700 140, IN Tel: +91 (0) 9836972027 / 8902228463 Fax: +91 (0) 3324924283 Email: sankar@liftomarine.org Web: www.liftomarine.org
Jeppesen India Private Limited 505, Raheja Arcade, Sector 11 CBD, Belapur, Navi Mumbai – 400 614 Tel: +91 (0) 2265103668, Fax: +91 (0) 2255939504 Mob: +91 (0) 9820238542 Email: raj_chakravorty@yahoo.com , info@c-map.co.in Web: www.c-map.com	EW Liner Charts & Publication (India) 2/524, Sundeep road, ChinnaNeelgarai, Chennai 600041 Tel/fax: +91(O) 4424490668 Mob: +91 (O) 9003245348

Availability of ENC's

M/s Jeppesen Norway AS Hovalandsveien 52 PO Box 212, N-4379, Egersund, Norway Tel: +47 51464700 Mob: +91 (0) 9322238542 Fax: +47 51464701 Email: enc@c-map.com Website: www.c-map.com	M/s Primar Norwegian Hydrographic Service, Postbox 60, 4001 Stavanger, Norway Tel: +47 51858700 Fax:- +47 51858708 E-mail: data@ecc.no Web:- www.primar.org
United Kingdom Hydrographic Office Admiralty Way, Taunton, Somerset TA1 2DN, UK Tel: +44 (0) 1823337900 Fax: +44 (0) 1823330561, 1823284077 Telex: 46274 Web: www.hydro.gov.uk	M/s IIC Technologies Limited B-2-350/5/B-22, Road No. 3 Banjara Hills, Hyderabad - 500 034 Tel: +91 (0) 4039144444 Fax: +91 (0) 4039144455 Email: somnath.marthi@iictechnologies.com Web: www.iictechnologies.com

For more information, please contact:

**Mauritius Hydrographic Service, Ministry of Housing and Land Use Planning,
Level 5, Ebene Tower, Ebene
Tel: +230 4013801; Fax: +230 4681773; Email: hydrounit@govmu.org**