

\* All listed Paper Charts & ENC's are published by National Hydrographic Office, India.

### Availability of Charts

<b>Cartographic Section</b> Ministry of Housing and Lands Level 3, Ebene Tower, Cybercity, Ebene, Mauritius Tel: +(230) 4681755 Fax: +(230) 4546608 Web: <a href="http://housing.govmu.org">housing.govmu.org</a> , Price: US \$ 33	<b>M/s IIC Technologies Limited</b> B-2-350/5/B-22, Road No. 3, Banjara Hills, Hyderabad-500 034 Tel: +91 (0) 40 39144444 Fax: +91 (0) 40 39144455 Email: <a href="mailto:somnath.marthi@iictechnologies.com">somnath.marthi@iictechnologies.com</a> Web: <a href="http://www.iictechnologies.com">www.iictechnologies.com</a>
<b>Jeppesen India Private Limited</b> 505, Raheja Arcade, Sector 11, CBD Belapur, Navi Mumbai-400 614 Tel: +91 (0) 22 65103668, Fax: +91 (0) 22 67939504 Mob: +91 (0) 9820238542 Email: <a href="mailto:raj_chakravorty@yahoo.com">raj_chakravorty@yahoo.com</a> , <a href="mailto:info@c-map.co.in">info@c-map.co.in</a> Web: <a href="http://www.c-map.com">www.c-map.com</a>	<b>Lift o Marine</b> Paper / Digital Charts Allen's Mansion, Flat C6 Nungi Station Road Kolkata-700 140, IN Tel: +91 (0) 9836972027 / 8902228463 Fax: +91 (0) 33 24924283, Email: <a href="mailto:sankar@liftmarine.org">sankar@liftmarine.org</a> Web: <a href="http://www.liftmarine.org">www.liftmarine.org</a>
<b>M/s C &amp; C Marine Combine</b> 25 Bank Street, 1 <sup>st</sup> Floor, Mumbai-400 023 Tel: +91 (0) 22 22660525/22661937/22672143 Fax: +91 (0) 22 22670896 Email: <a href="mailto:ccmarine@vsnl.com">ccmarine@vsnl.com</a> , <a href="mailto:sales@ccmarine.in">sales@ccmarine.in</a>	<b>EW Liner Charts &amp; Publication (India)</b> 2/524, Sundeep Road, ChinnaNeelangarai, Chennai-600 041 Tel/Fax: +91 (0) 44 24490668 Mob: +91 (0) 9003245348 Email: <a href="mailto:www.maritimeindia@airtelmail.in">www.maritimeindia@airtelmail.in</a>

### Availability of ENC's

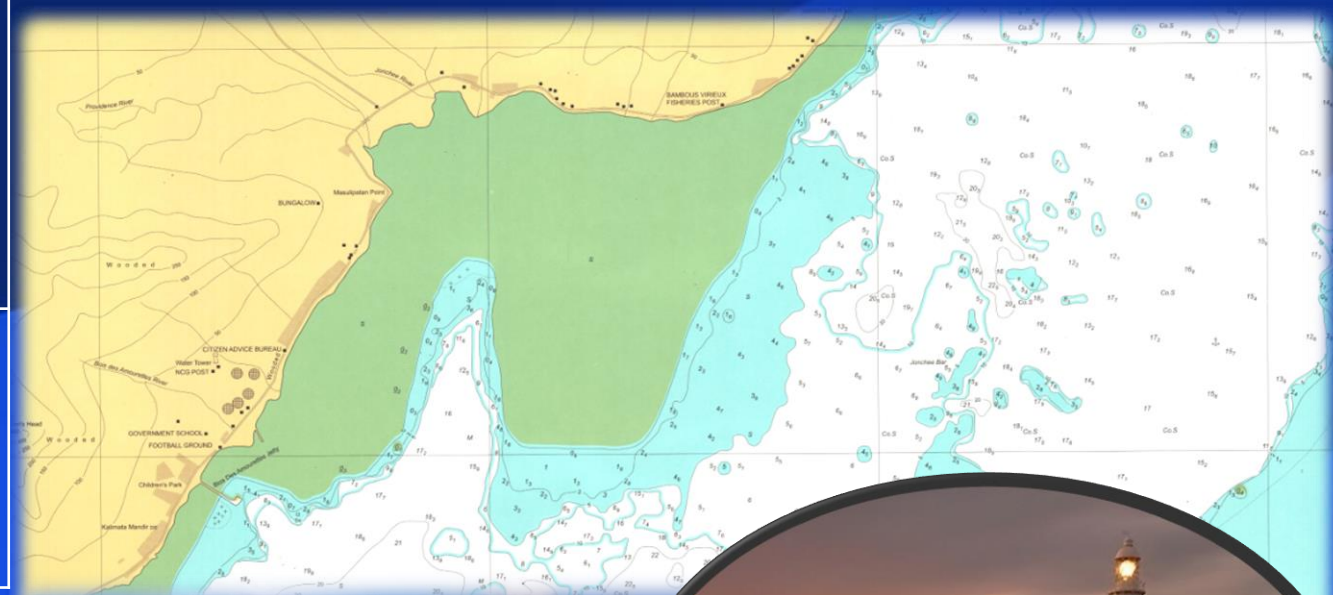
<b>M/s Jeppesen Norway AS</b> Hovalandsveien 52 PO Box 212, N-4379, Egersund, Norway Tel: +(47) 51464700 Mob: +91 (0) 9322238542 Fax: +(47) 51464701 Email: <a href="mailto:enc@c-map.com">enc@c-map.com</a> Web: <a href="http://www.c-map.com">www.c-map.com</a>	<b>M/s Primar</b> Norwegian Hydrographic Service, Postbox 60, 4001 Stavanger Norway Tel:- +(47) 51858700 Fax:- +(47) 51858708 Email: <a href="mailto:data@ecc.no">data@ecc.no</a> Web:- <a href="http://www.primar.org">www.primar.org</a>
<b>United Kingdom Hydrographic Office</b> Admiralty Way, Taunton, Somerset TA1 2DN, UK Tel: +44 (0) 1823 337900 Fax: +44 (0) 1823 330561, 1823 284077 Telex: 46274 Web: <a href="http://www.hydro.gov.uk">www.hydro.gov.uk</a>	<b>M/s IIC Technologies Limited</b> B-2-350/5/B-22, Road No. 3 Banjara Hills Hyderabad- 500 034 Tel: +91 (0) 40 39144444 Fax: +91 (0) 40 39144455 Email: <a href="mailto:somnath.marthi@iictechnologies.com">somnath.marthi@iictechnologies.com</a> Web: <a href="http://www.iictechnologies.com">www.iictechnologies.com</a>

### For more information, please contact:

Hydrographic Unit, Ministry of Housing and Lands, Level 5, Ebene Tower, Cybercity, Ebene,  
 Republic of Mauritius. Tel/ Fax: +(230) 4681773, Email: [hydrounit@govmu.org](mailto:hydrounit@govmu.org)



## CATALOGUE OF PAPER CHARTS AND ELECTRONIC NAVIGATIONAL CHARTS MAURITIUS



Published by

Hydrographic Unit, Ministry of Housing and Lands  
 May 2017



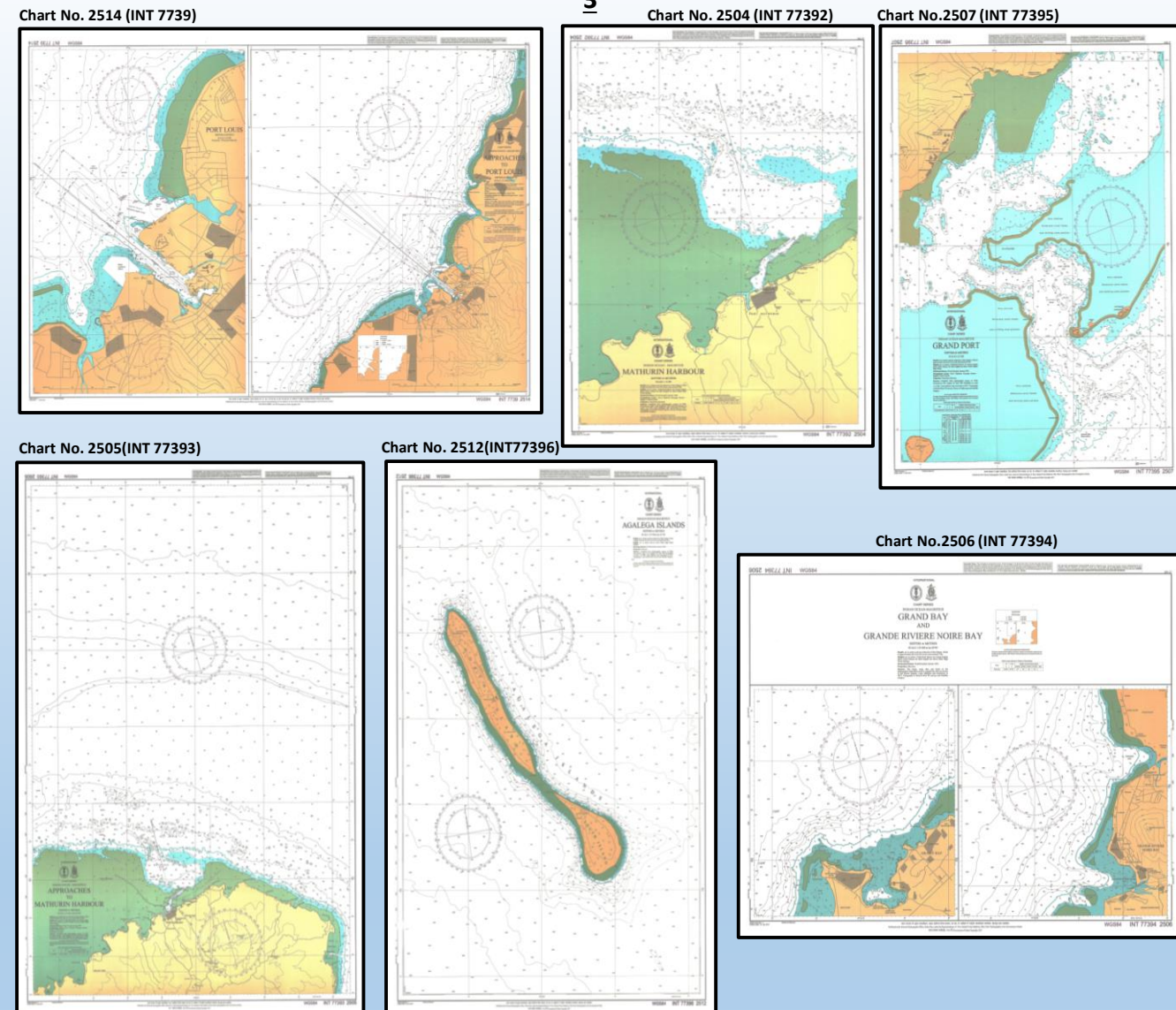
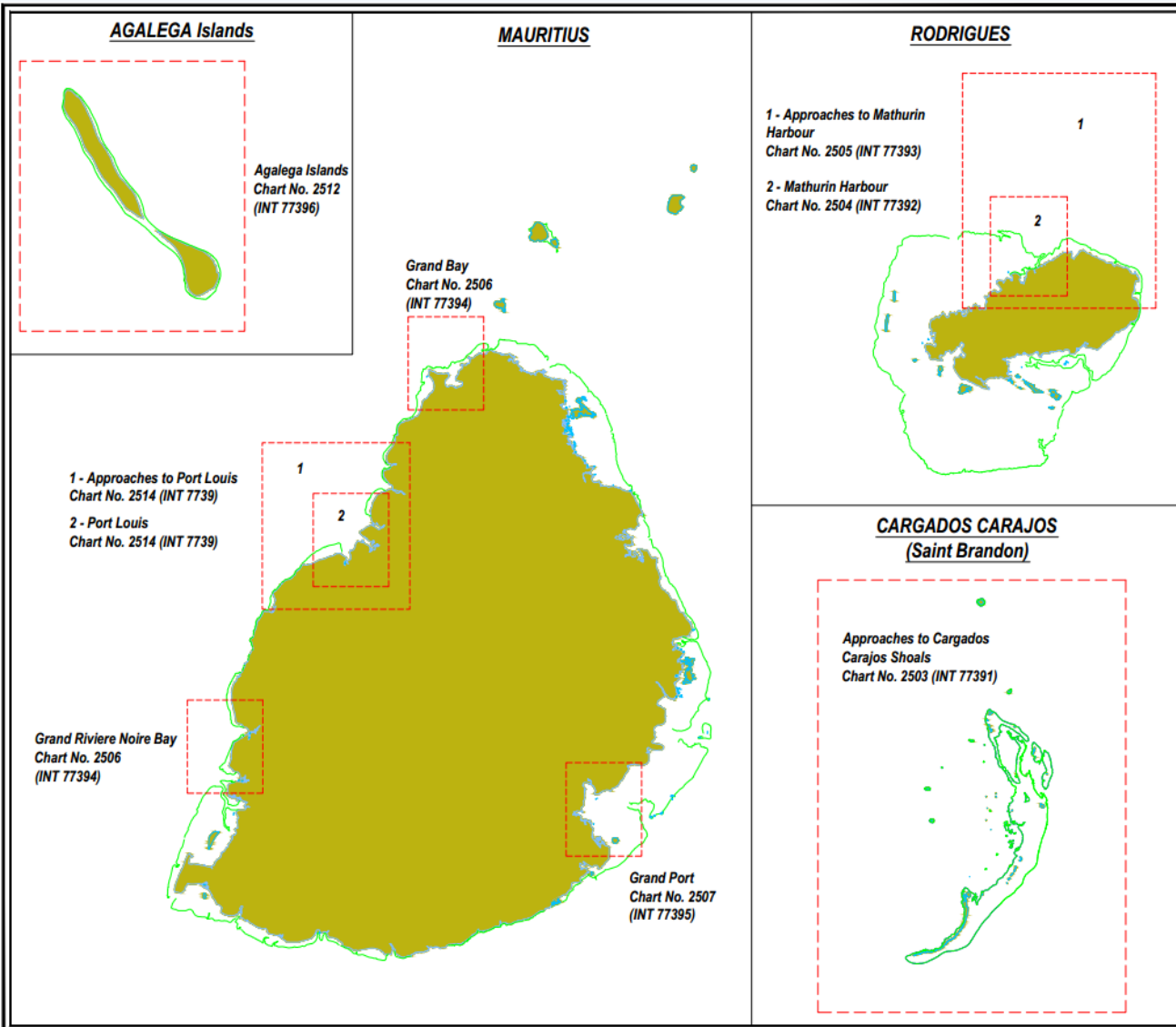


Chart No.	2514 (INT 7739)		2504 (INT 77392)	2505 (INT 77393)	2507 (INT 77395)	2506 (INT 77394)		2512 (INT 77396)	2503 (INT 77391)
Title	Port Louis	Approaches to Port Louis	Mathurin Harbour	Approaches to Mathurin Harbour	Grand Port	Grand Bay and Grande Riviere Noire Bay	Grand Bay and Grande Riviere Noire Bay	Agalega Islands	Approaches to Cargados Carajos Shoals (Saint Brandon)
Geographic Location	Mauritius island	Mauritius Island	Rodrigues Island	Rodrigues Island	Mauritius Island	Mauritius Island	Mauritius Island	Agalega Islands	Cargados Carajos Shoals
North Latitude	20° 06.35' S	20° 00.04' S	19° 38.00' S	19° 29.70' S	20° 20.90' S	19° 56.56' S	20° 18.04' S	10° 15.90' S	16° 13.00' S
South Latitude	20° 10.75' S	20° 13.16' S	19° 42.40' S	19° 43.00' S	20° 25.35' S	20° 01.13' S	20° 22.60' S	10° 33.60' S	16° 53.00' S
East Longitude	57° 30.70' E	57° 33.00' E	63° 26.43' E	63° 30.50' E	57° 47.20' E	57° 36.14' E	57° 23.00' E	56° 45.45' E	59° 49.00' E
West Longitude	57° 27.60' E	57° 21.00' E	63° 23.00' E	63° 21.25' E	57° 43.75' E	57° 31.60' E	57° 18.35' E	56° 33.35' E	59° 22.00' E
Scale	1 : 12 500	1 : 37 500	1 : 12 500	1 : 25 000	1 : 12 500	1 : 25 000	1 : 25 000	1 : 37 500	1 : 75 000
Projection	Transverse Mercator	Mercator	Transverse Mercator	Mercator	Transverse Mercator	Mercator	Mercator	Mercator	Mercator
Publication Date	Dec 14	Dec 14	Jan 17	Jan 17	Jan 17	Jan 17	Jan 17	Jan 17	Dec 16
Edition Date	15 Dec 14	15 Dec 2014	31 Jan 17	31 Jan 17	15 Jan 17	31 Jan 17	31 Jan 17	31 Jan 17	15 Dec 16
ENC Number	IN62514P	IN52514A	IN62504H	IN52505T	IN62507P	IN52506D	IN52506B	IN52512I	IN42503S

